

A

B

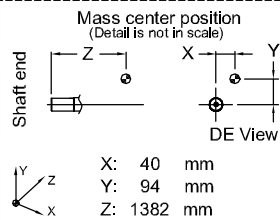
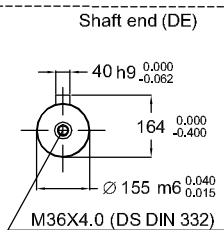
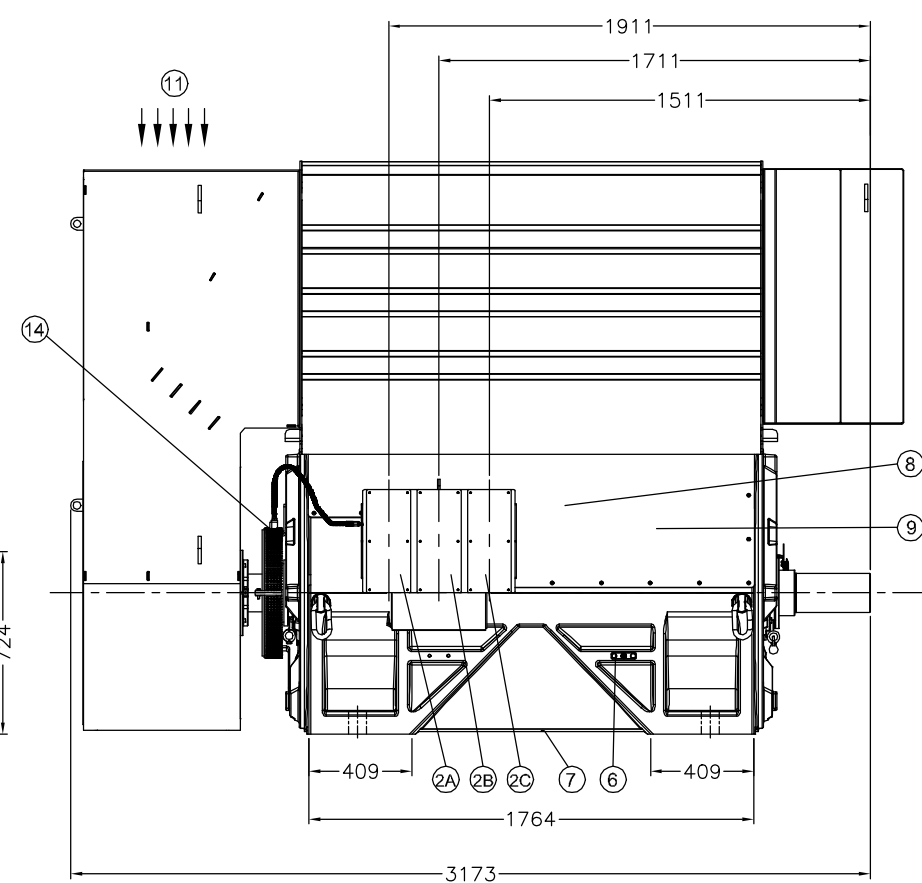
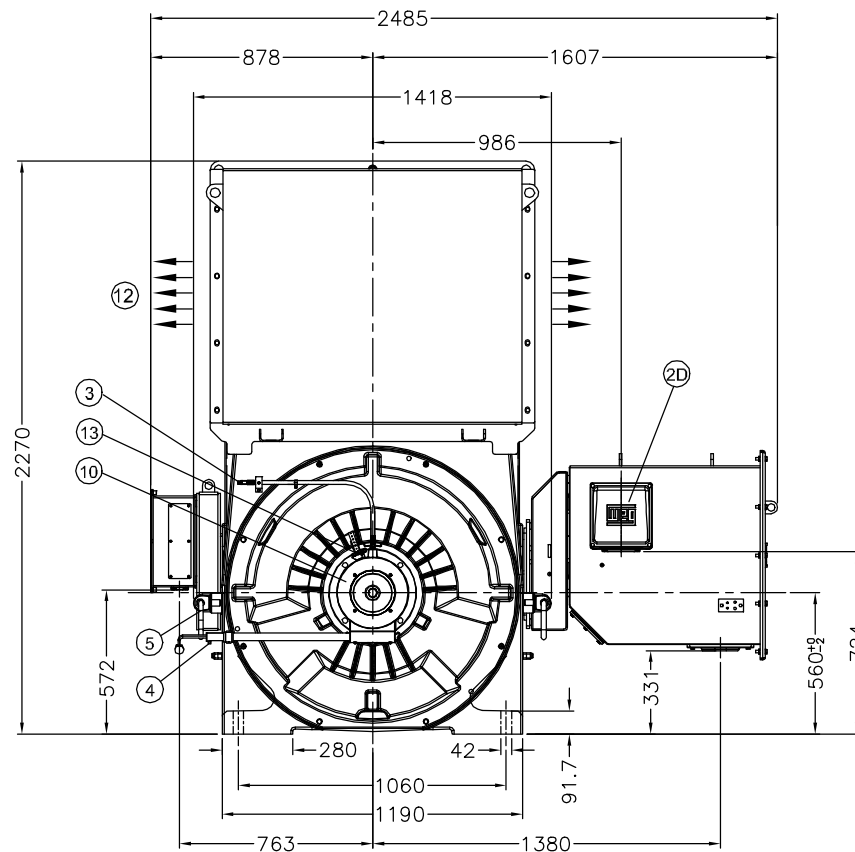
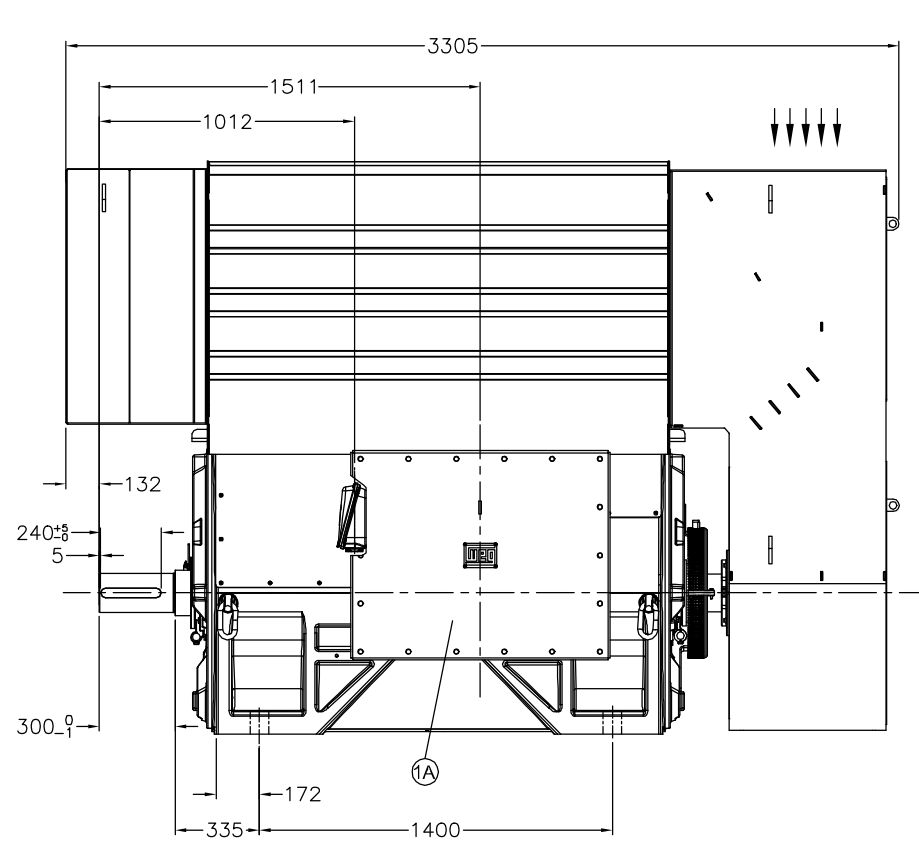
C

D

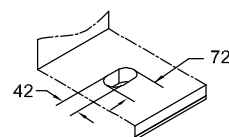
E

DE - DRIVE-END SIDE

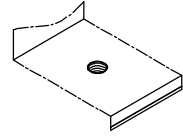
NDE - NON DRIVE-END SIDE



Mounting Hole



Vertical jacking threaded hole  
(Detail is not in scale)



Mounting tolerance	
Dimensions range (D)	Tolerance
0 < D ≤ 400	± 10
400 < D ≤ 1000	± 20
1000 < D ≤ 2000	± 30
2000 < D ≤ 4000	± 35
4000 < D ≤ 8000	± 40
Unit: mm	



Representation of the machine is illustrative only.  
Some features may not be represented.  
For installation or maintenance, consult operation manual.

Protection:	NBR 60034-5	IEC 60034-5	Machined parts:	ISO 2786
Dimension:	NBR 15623	IEC 60072	Weld Constr:	ISO 8015
Tolerance:	NBR 6158	ISO 286	Castings:	ISO 8062
Key:	NBR 15623	IEC 60072		

NOTES

Machine: W60 560 - B3R  
Description: 2800kW - 6600V - 50Hz - 4P - IP55  
Approximated machine mass: 10312 kg  
Rotor approximated mass: 2136 kg  
Painting plan: 212 P  
Final color: RAL 5010  
Datasheet: 22128/2019

14	Speed Sensor - PEPPERL & FUCHS - Model NJ2-12GM-N-V1
13	Grounding brush
12	Air outlet
11	Air inlet
10	Temperature sensor - Pt-100 - Bearing DE and NDE (internal to the machine)
9	Temperature sensor - Pt-100 - Stator (internal to the machine)
8	Space heater (internal to the machine)
7	Drain - 6 x M12 x 1,75
6	Grounding 25 to 185 mm²
5	Machine lifting Lug
4	Bearing lubricant outlet
3	Bearing lubricant inlet
2D	Accessories T. box D - Current transformers - 3 x M20 x 1,5
2C	Accessories T. box C - Switch Amplifier of speed sensor (KCD2-SR-Ex1.LB) - 3 X M20 X 1,5
2B	Accessories T. box B - Temperature sensor of stator and bearings 3 x M20 x 1,5
2A	Accessories T. box A - Space heater - 1 x M20 X 1,5
1A	Stator terminal box - 3 x M63 x 1,5

FOUNDATION LOAD

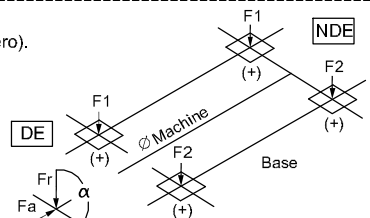
Fa, Fr and α provided by customer. If not provided, considered as 0 (zero).

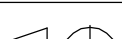

Static load not considered in the dynamic load

(1) Continuous duty

(2) Alternating loads under short circuit condition

Loads	F1 (kN)	F2 (kN)
Static load	+ 25.3	+ 25.3
Dynamic load <sup>1</sup>	- 8.5	+ 8.5
Loads on failure case <sup>2</sup>	+/- 84.5	+/- 84.5



GROSS WEIGHT		kg		NET WEIGHT		kg		SCALE	1:30		
500001594149				FIRST ISSUE		RALCANTARA		OLOPEZ	OLOPEZ	21.05.2019	00
ECM		LOC		SUMMARY OF MODIFICATIONS		EXECUTED		CHECKED	RELEASED	DATE	VER
EXECUTED		RALCANTARA		 DIMENSIONAL		10006635893					
CHECKED		OLOPEZ									
RELEASED		OLOPEZ									
W60 560						000		00			
RFI DT		21.05.2019		WMX		HUFHUFTOCA		INGENIERIA DEL PRODUCTO		SHEET 1 / 2	

10006635893

000 | 00

